

## Hotel Tahiti Pearl Beach Resort - 4\*

Set in lush gardens at Lafayette Beach on the north east coast, the Tahiti Pearl Resort is the idyllic retreat boasting direct access to a unique volcanic black sanded beach, with stunning views on Matavai Bay, the ocean, and the sunset.

Located just 7kms from Papeete city center, the resort provides convenient access to some of the best local attractions.

Guests, be it honeymooners, businessmen, or just vacationers, enjoy the resort wide range of free activities, Le Spa, the panoramic swimming pool and jacuzzi.

The Ocean View Jacuzzi Rooms, with the private jacuzzi on the terrace, are definitely worth visiting...

### Location

20 minutes from airport by bus

Car rental at your disposal

Free shuttle to the city (Drop off and pick up at the Tourism Office in Papeete) :

Monday to Friday & Saturday morning

Departure 08.30am - Return 12.00pm

Departure 02.30pm - Return 5.00 pm



Welcome amenity "oshiburi" refreshing towel upon arrival

Specified Welcome Gifts may be replaced without notice by others with same value



### Room Categories

17	Deluxe Ocean View Room	2A+1Inf	
20	Ocean View Jacuzzi Room	2A+1Inf	Our Preferred Category!
16	Ocean View Suite	3A+1C+1Inf	Wheelchair access
6	Premium Deluxe Ocean View Room	2A+1Inf	
6	Premium Ocean View Jacuzzi Room	2A+1Inf	Our Preferred Category!
11	Premium Ocean View Suite	3A+1C+1Inf	
14	Premium Ocean View Duplex	3A+1Inf	
1	Premium 2-Bedroom Ocean View Suite	5A+1C	

Check-in 14:00 Check-out 11:00

No transit room available.

Shower available at the Spa of the hotel: free

### Dining - Entertainment Features

Restaurant HITI MAHANA 200 seats - Polynesian, European & South East Asian Cuisine

Breakfast 06h30 - 10h00, Lunch 11h30 - 14h00, Dinner: 18h30 - 22h00

Thursday Evenings : Traditional Marquesian dance show

Friday Evenings : barbecue buffet featuring an award winning Tahitian dance show

Room Service 06h00 - 22h00

Bay BAR Poolside, Snack 11h30 - 22h00

Ideal place to enjoy a cocktail and a breathing view of the ocean at the end of the day

Daily happy hour : 17h30 - 18h30

Lafayette Bar, located above the restaurant, Saturdays from 5pm to 10 pm

Happy Hour from 5h30 pm to 6h30 pm

Different bands (100% local, groovy, jazzy, pop) will perform each Saturdays of the month, offering different guests types of ambiances during sunsets

#### EVENTS & CONFERENCING INFORMATION :

James Norman Hall Lounge - The James Norman Hall Lounge is ideal for private cocktail events, small diner parties or a convivial meeting space.

Guaranteed panoramic views across to Lafayette beach, the ocean and the infinity pool. A popular venue for groups and get togethers, catering for a multitude of different functions.

Capacity: 25 seats

Lafayette Lounge - Named after a French frigate, the Lafayette Bar is the ultimate venue for private events, offering spectacular views and dramatic sunsets towards Moorea, Tahiti's sister Island.

Capacity: 250 cocktail

Pool Deck - Celebrate waterfront private parties, cocktails, weddings, birthdays and all special events. Perfect beach and pool party venue.

Capacity: 80 seats or 120 standing

Endeavour Ball Room - Air conditioned ball room for large gala evenings and banquets.

Capacity: 400 seats or 600 standing

Garden Patio - Undercover open space patio facing garden and Lafayette beach for that informal but elegant, cocktail dinatoire event. Perfect for prize giving before attending gala dinner.

Capacity: 600 standing

---

## Facilities and Activities

Free Unlimited Internet access property wide

WIFI available with free access in the lobby and within the restaurant for all resort's clients

Cable connexion and wi-fi available within the rooms

3 computers available in the business center (open 24/7) with free access.

Tours and activities desk open 08h00 - 12h00

Le Spa by Tahiti Pearl Beach Resort Large choice of massages & treatments, sauna, steam room. The resort's full service Spa offers an environment of harmony & relaxation where you can experience the unique & exotic benefits from traditional Tahitian beauty treatments.

Signature treatments feature black sand & volcanic stones as well as indigenous fruits such as mango, guava, coconut, vanilla & papaya

Open everyday 9h30 - 20h00

Several boutiques are located within the hall:

Handycraft boutique 100% local made

A boutique of local contemporary Art

A famous "patisserie", well reknowned in French Polynesia

We strongly recommend that you pre-book some activities in advance, only way to guarantee availability.

Cultural Activities :

- Pareo Tying Demo
- Tifaifai sewing
- Austral Island weaving
- Woodcarving
- Shell Lei Making
- Flower Lei Making
- Tahitian Dance classes

Romantic Touches - Cheese platter, Fruit Basket, Champagne, Wine, Necklace of flowers...

Romantic Dinners - Dinner under the stars at waterfront restaurant, ...

Wedding Ceremonies - Polynesian Wedding, Royal Polynesian Wedding

**Free Activities:** Aquagym, Beach Towels Provided, Fitness Center, Hammam, Pareo Tying Lessons, Snorkeling Equipment, Sauna, Yoga,

**Other Facilities:** Baby Sitting, Beauty Salon, Pantry & Sundry Shop, Business Center, Ice Machine, Jacuzzi, Laundry Service, Shuttle Bus From/To Town, Swimming Pool, Kids Club,

---

## Children

Kid's Club with painting, clay sculpturing, arts and crafts ateliers, Cinema, Electronic games as Wii & Playstation, Entertainment and activities, billiards, tennis table, trampoline, table soccer.  
Qualified staff.

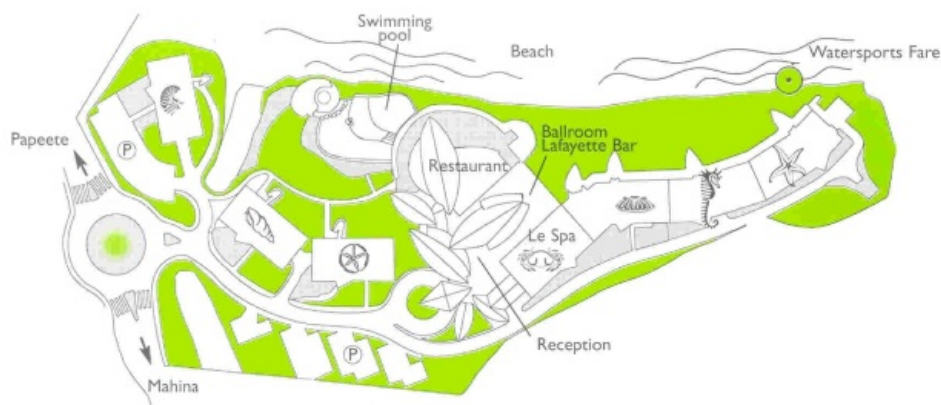
## Important Remarks

Information on this Factsheet is subject to change without prior notice.

Resort fee of 1800xpf includes :

- 1 bottle of water per day
- Illimited access to internet (wifi and cable)
- Shuttle twice a day to the city center (excepted week ends and public holidays)
- Access to Sauna and Hammam / Fitness Center
- Access to business center 24/7
- Daily Sport and Cultural activities
- Discount of 10% on the SPA (on individual only)
- 10% on laundry service (except pressing)
- Kids Club (except on saturday afternoon and sundays)

Accepted Credit Cards : Visa, Mastercard, American Express, Diners Club, JCB, local credit cards



## Room Facilities

Air Conditionning, Bathtub, Cable TV, Instant Coffee/Tea Facilities, Hair Dryer, Daily Housekeeping, Iron, Minibar filled on request, Private Bathroom/WC, In Room Safety Box, Shower, Telephone, Terrace,

## Deluxe Ocean View Room

These spacious, elegant and comfortable rooms with a balcony offer beautiful views of the Matavai Bay, sunsets over Moorea or the Lafayette Beach. The décor is a tasteful mix of contemporary style and Polynesian influence. Our ocean view Tahiti hotel rooms feature one king size bed or two double beds.

**Maximum Occupancy:** 2A+1Inf

**Bed Configuration:** 1 king bed or 2 single beds (+ 1 baby bed)

**More Info:** Surface 42.23m<sup>2</sup>

**Additional Facilities:** 1 Free Bottle of Water, In Room Internet Access, NO Turndown service,



## Ocean View Jacuzzi Room

Ocean View Jacuzzi Rooms are similar in style to the Ocean View Rooms. As an added bonus, delight in your own private Jacuzzi discreetly located discreetly



behind wooden louvers on your balcony. All rooms have king size beds.

**Maximum Occupancy:** 2A+1Inf

**Bed Configuration:** 1 king bed or 2 single beds (+ 1 baby bed)

**More Info:** Surface 42.60m<sup>2</sup>

**Additional Facilities:** 1 Free Bottle of Water, In Room Internet Access, Private Jacuzzi, NO Turndown service,



## Ocean View Suite

These spacious and beautiful suites feature a separate bedroom, a large bathroom with a tub and a separate shower. The modern living space opens wide onto a private outdoor Lanai balcony offering a spectacular view of the ocean and beyond.

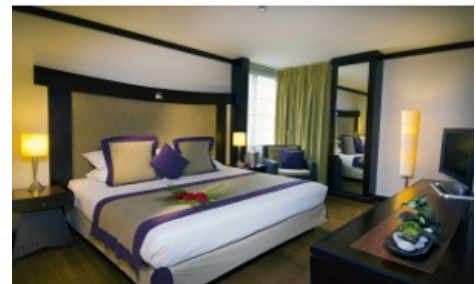
1 unit with wheelchair access

**Maximum Occupancy:** 3A+1C+1Inf

**Bed Configuration:** 1 king bed or 2 single beds + 1 sofa bed (+ 1 rollaway bed + 1 baby bed)

**More Info:** Surface room + terrace 73m<sup>2</sup>

**Additional Facilities:** 1 Free Bottle of Water, In Room Internet Access, NO Turndown service,



## Premium Deluxe Ocean View Room

Located in the resort top floors, Premium rooms benefit from the same interior settings included in the standard categories while offering a full panoramic view over the mythical/legendary Matavai Bay and Moorea Island. From your private balcony enjoy the stunning view and admire the dolphins playing or the whales in season. Spacious, elegant and comfortable, all rooms are elegantly decorated combining modernity with a Polynesian exotic touch. In the evening, make the most of the exceptional turn-down service, and enjoy special attentions all through your stay.

**Maximum Occupancy:** 2A+1Inf

**Bed Configuration:** 1 king bed or 2 single beds (+ 1 baby bed)

**More Info:** Surface 42m<sup>2</sup>

**Additional Facilities:** Bathrobe, Slippers, Turndown service,



## Premium Ocean View Jacuzzi Room

Located in the resort top floors, Premium rooms benefit from the same interior settings included in the standard categories while offering a panoramic view over the mythical/legendary Matavai Bay and Moorea Island. From your private balcony enjoy the stunning view and admire the dolphins playing or the whales in season. Subtly located on the balcony behind wooden louvers, the private Jacuzzi is the added value of these rooms. Allow yourself a private instant of absolute peace. Spacious, elegant and comfortable, all our rooms are elegantly decorated combining modernity with a Polynesian exotic touch. In the evening, make the most of the exceptional turn-down service, and enjoy special



attentions all through your stay.

**Maximum Occupancy:** 2A+1Inf

**Bed Configuration:** 1 king bed or 2 single beds (+ 1 baby bed)

**More Info:** Surface 42.60m<sup>2</sup>

**Additional Facilities:** Bathrobe, Daily Bottle of Mineral Water, Private Jacuzzi, Slippers, Turndown service,



### Premium Ocean View Suite

Located in the resort top floors, Premium Suites displays the same interior settings as the standard Ocean View Suite cat. while offering a better panoramic view over the mythical/legendary Matavai Bay and Moorea Island. From your private balcony enjoy the stunning view and admire the dolphins playing or the whales in season. The units include a large room with separate lounge and bedroom, along with premier amenities at your disposal. A large bathroom furnished with two washbasins and both bathtub and shower for even more convenience and comfort. Spacious, elegant and comfortable, all rooms are elegantly decorated combining modernity with a Polynesian exotic touch. In the evening, make the most of the exceptional turn-down service, and enjoy special attentions provided all through your stay.

**Maximum Occupancy:** 3A+1C+1Inf

**Bed Configuration:** 1 king bed or 2 single beds + 1 sofa bed (+ 1 rollaway bed + 1 baby bed)

**More Info:** Surface 73m<sup>2</sup>

**Additional Facilities:** Bathrobe, Daily Bottle of Mineral Water, Slippers, Turndown service,



### Premium Ocean View Duplex

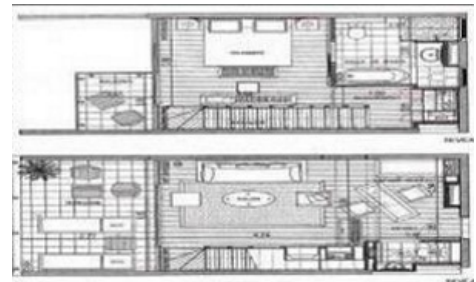
Located in the top floor of our resort, the Premium Duplex rooms displays the same interior as the standard Ocean view Suite categories, while offering a remarkable scenery between heaven and the bright blue sea. Enjoy serene moments while soaking up the panoramic view over the Matavai Bay and Moorea Island. In the late afternoon, admire the stunning sunsets from your private balcony. Enjoy your private balcony on each floor, along with a lounge and working space downstairs and a bedroom on the top floor with floor-to-ceiling windows allowing you to fully enjoy the view on the Pacific Ocean. Spacious, elegant and comfortable, all rooms are elegantly decorated in a contemporary style, combining modernity with a Polynesian exotic touch. Perfect for a stay together as a family, make the most of the exceptional turn-down service, and enjoy special attentions provided all through your stay.

**Maximum Occupancy:** 3A+1Inf

**Bed Configuration:** 1 king size bed or 2 twin bed + 1 sofa bed (+ 1 baby bed)

**More Info:** Surface room + terrace 62m<sup>2</sup>

**Additional Facilities:** Bathrobe, Daily Bottle of Mineral Water, Slippers, Turndown service,



### Premium 2-Bedroom Ocean View Suite

Located on the top floor of our hotel, the Premium Suite 2 bedrooms combines an Ocean view Suite and a Deluxe Ocean view room offering a spectacular view of the bay and the ocean. The unit is elegantly decorated in a contemporary style, includes 2 spacious bedroom on the top floor, a comfortable work area and lounge on the lower floor along with a fully equipped kitchen on the terrace with large windows glass offering an outstanding view of the Pacific Ocean lounge. The Premium Suite 2 rooms is ideal for big families.

**Maximum Occupancy:** 5A+1C

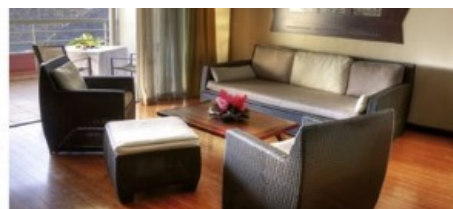
**Bed Configuration:** In the Suite : 2 king size bed and 1 sofa bed (+ 1 baby bed)



**Bed Configuration:** in the Suite : 2 king size bed and 1 sofa bed (+1 baby bed)  
In the Deluxe Room : 1 king size bed or 2 twin bed

**More Info:** Surface 115m<sup>2</sup>

**Additional Facilities:** Bathrobe, Daily Bottle of Mineral Water, In Room Internet Access / Wifi, Slippers, Turndown service,



Updated: August 2015